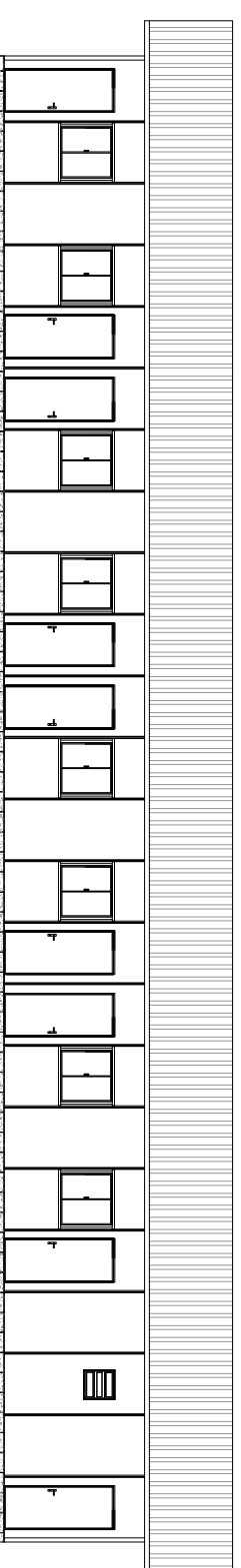
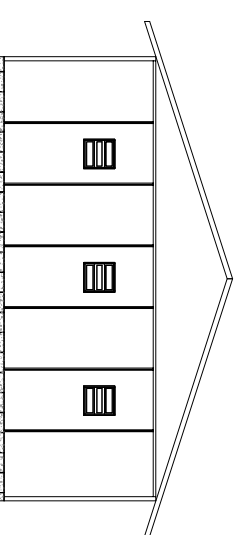


PLANTA BAIXA


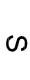


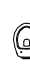






FACHADA FRONTAL



FACHADA LATERAL DIREITA

LEGENDA:

-  Quadro de distribuição
-  S Interruptor simples
-  Tomada baixa TUG - 2P+T
-  Luminária fluorescente 2x40w 220V/110V
-  Vaso sanitário
-  Lavatório coletivo
-  Mictório coletivo
-  Chuveiro
-  Ralo sifonado 100 mm

Pé direito: 3,00 m Área útil: 256,28 m² Área total: 311,65 m²



CANTEIROS PRÉ-FABRICADOS
FONE FAX: (11) 4788-3063

EDIFICAÇÃO:

ALOJAMENTO(311)