




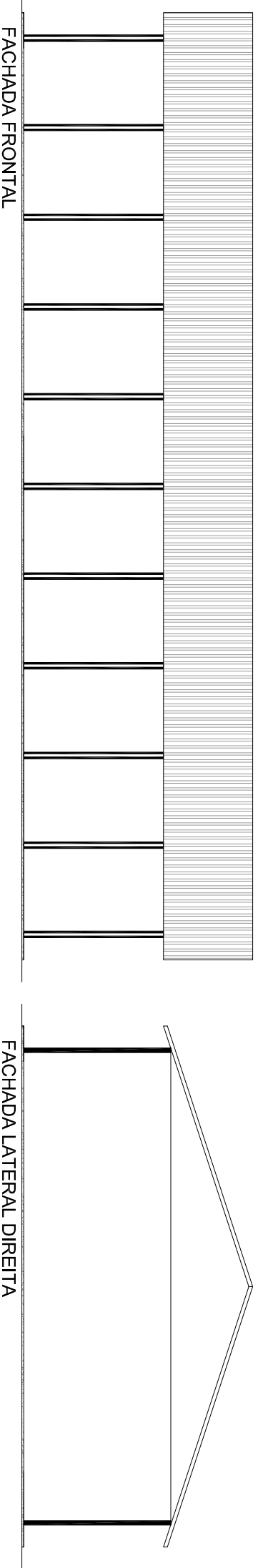
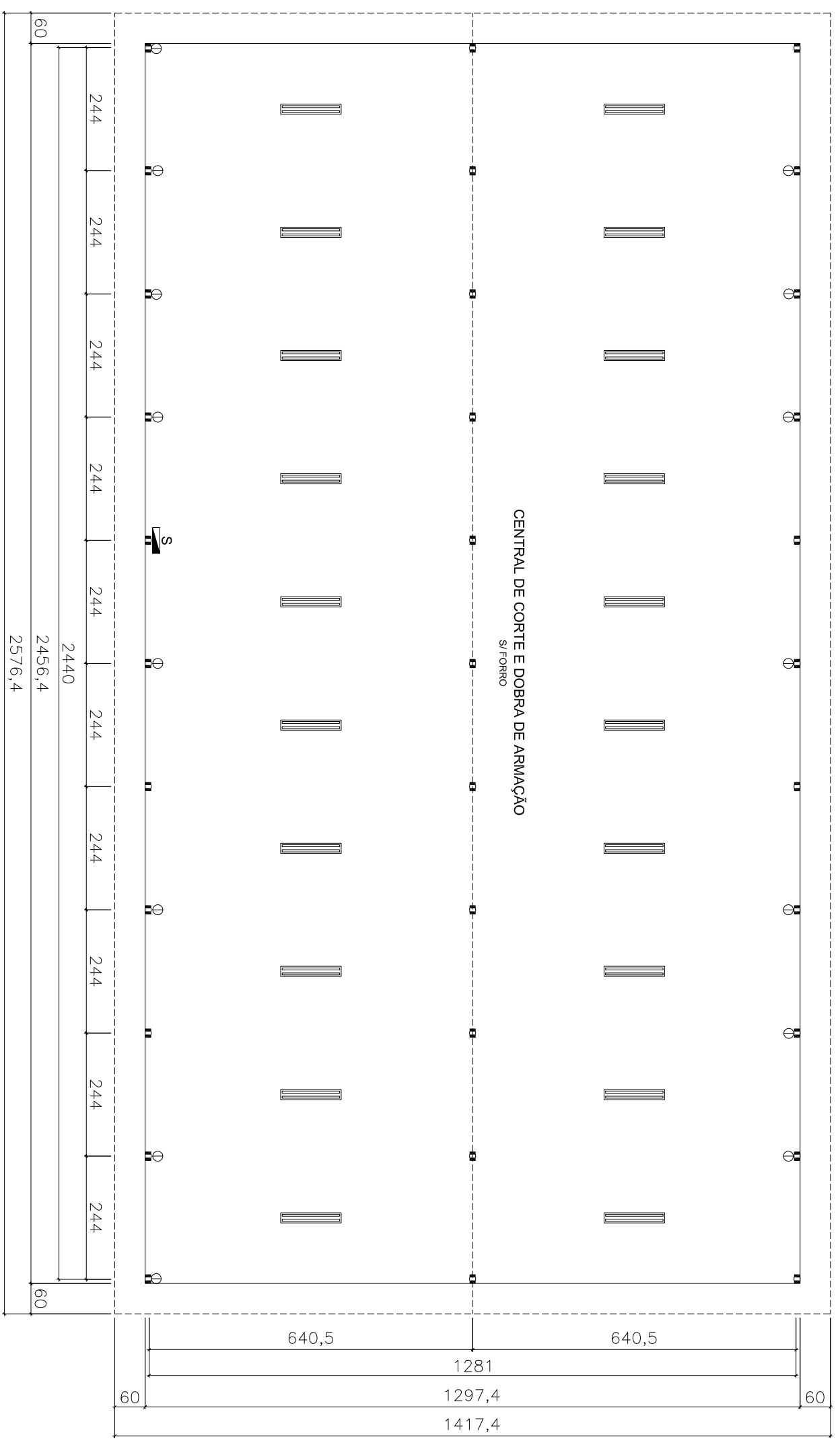


LEGENDA:

-  Quadro de distribuição
-  Interruptor simples
-  Tomada baixa TUG - 2P+T
-  Luminária fluorescente 2x40w 220V/110V
-  Pilar de madeira



Pé direito: 3,00 m Área útil: 318,69 m² Área total: 365,17 m²

TALGATTI
 CANTEIROS PRÉ-FABRICADOS
 FONE FAX: (11) 4788-3063

EDIFICAÇÃO:
ARMAÇÃO / CARPINTARIA (365)