



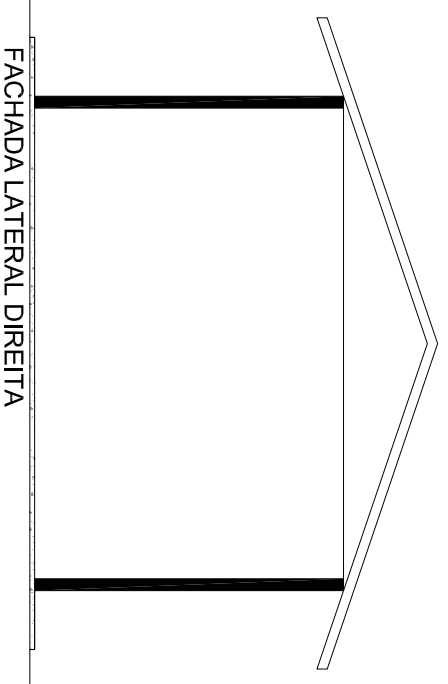
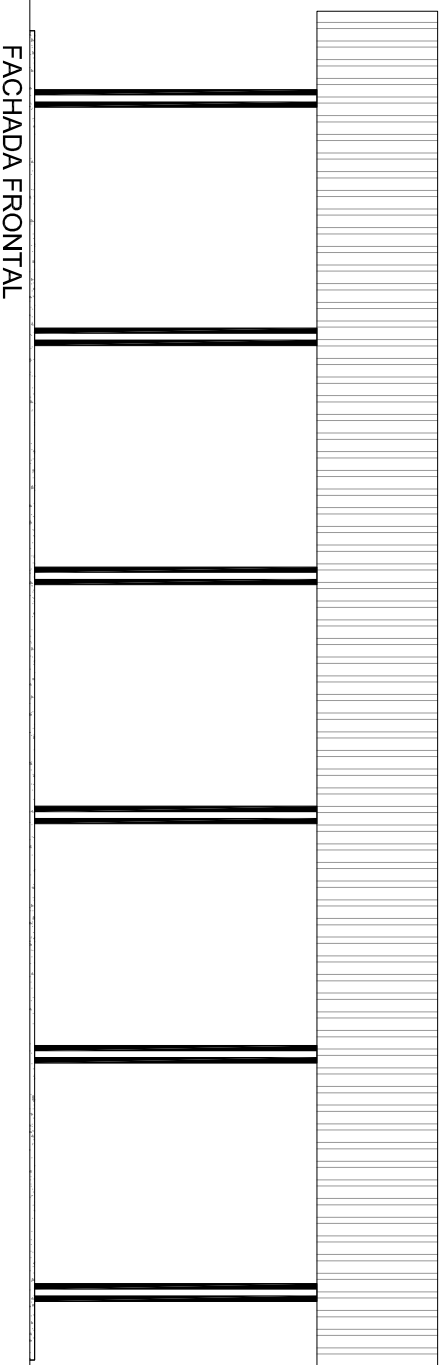
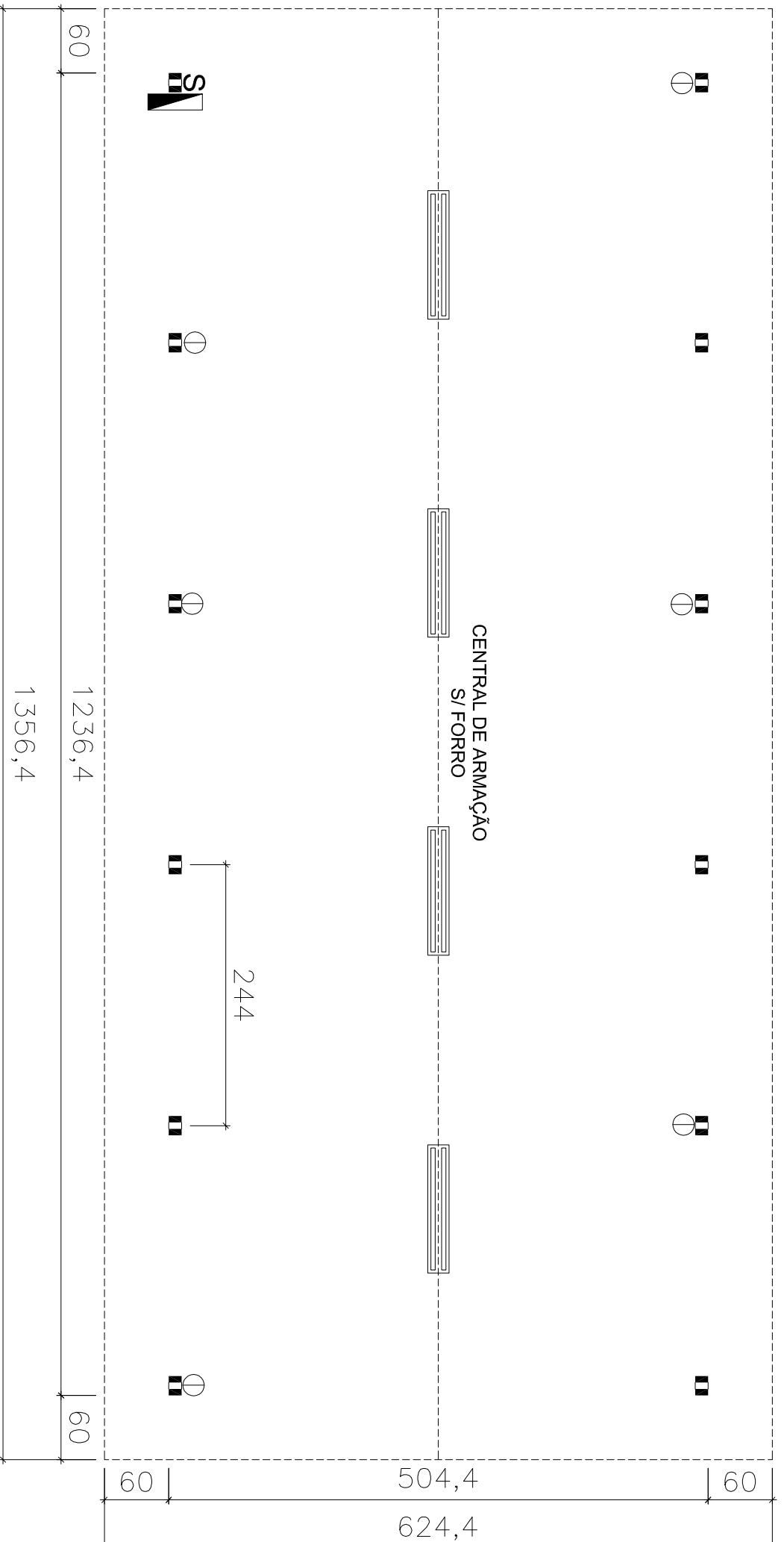


LEGENDA:

-  Quadro de distribuição
-  Interruptor simples
-  Tomada baixa TUG - 2P+T
-  Luminária fluorescente 2x40w 220V/110V



Pé direito: 3,00 m Área útil: 62,36 m² Área total: 84,69 m²



CANTEIROS PRÉ-FABRICADOS
FONE FAX: (11) 4788-3063

EDIFICAÇÃO:
ARMAÇÃO / CARPINTARIA (84)